

# RESOURCE GUIDE FOR SUPPORTING NEWCOMERS

*During their Initial Resettlement*



## Housing

**TIP SHEET:** [Renting to Refugees and Other Eligible Newcomers](#)

**TOOLKIT:** [Housing Stability Planning Toolkit](#)

**TOOLKIT:** [Housing Maintenance](#)

**E-LEARNING:** [Accessing HUD Affordable Housing](#)

**TOOL:** [Navigating Housing Screening Criteria](#)

**BLOG:** [3 Ways to Connect with Local Emergency Shelter Systems](#)

**BLOG:** [Helping with the Housing Search](#)

## Groceries and Food

**BLOG:** [3 Steps to Support Clients' Food Security](#)

**VIDEO:** [Supplemental Nutrition Assistance Program \(SNAP\)](#)



## Social Institutions

**GUIDE:** [Fostering Community Connections](#)

**EVIDENCE SUMMARY:** [Strategies to Help with Social Integration](#)

**TOOL:** [Public Transportation Navigation Cards](#)

**BLOG:** [Navigating Difficult Conversations about Resettlement](#)

# RESOURCE GUIDE FOR SUPPORTING NEWCOMERS

*During their Initial Resettlement*

## Employment

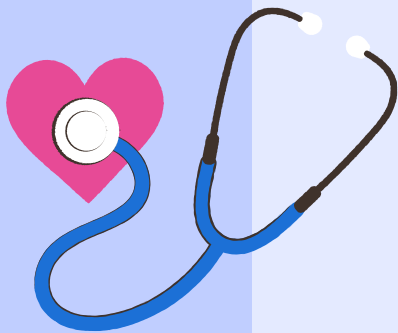
**TOOL:** [Contacting Employer Partners: Phone & Email Templates](#)

**GUIDE:** [Employment Authorization Documentation Reference Guide](#)

**GUIDE:** [Establishing and Maintaining Employer Partners](#)

**BLOG:** [FAQs on Newcomer Resumes and Templates](#)

**BLOG:** [4 Strategies for Empowering Women in the Workforce](#)



## Health and Wellness

**CHECKLIST:** [Helping Clients Prepare for Initial Medical Appointments](#)

**GUIDE:** [Assisting with Navigating the U.S. Health Care System](#)

**GUIDE:** [Problem-Solving Health Care Access Issues](#)

**GUIDE:** [Mental Health & Psychosocial Support Service Mapping](#)

**TIP SHEET:** [Managing Stress in a New Country](#)

## Education and Youth Services

**WEBINAR:** [Partnering with Schools to Support Refugee Students](#)

**EVIDENCE SUMMARY:** [Preventing Bullying of Refugee Youth](#)

**TOOLKIT:** [Resources & Tips for Successful Financial Aid Application](#)

**GUIDE:** [Promoting Supportive Mentoring for Refugee Youth](#)

**BLOG:** [Child Care Resources for Refugee Service Providers](#)

**GUIDE:** [Unaccompanied Refugee Minor](#)

